

Beckford's Tower

Make your own
3D model!

You
will need:

- White card or paper
- Colouring pens, pencils or paints
- Glue and scissors



What's
inside?

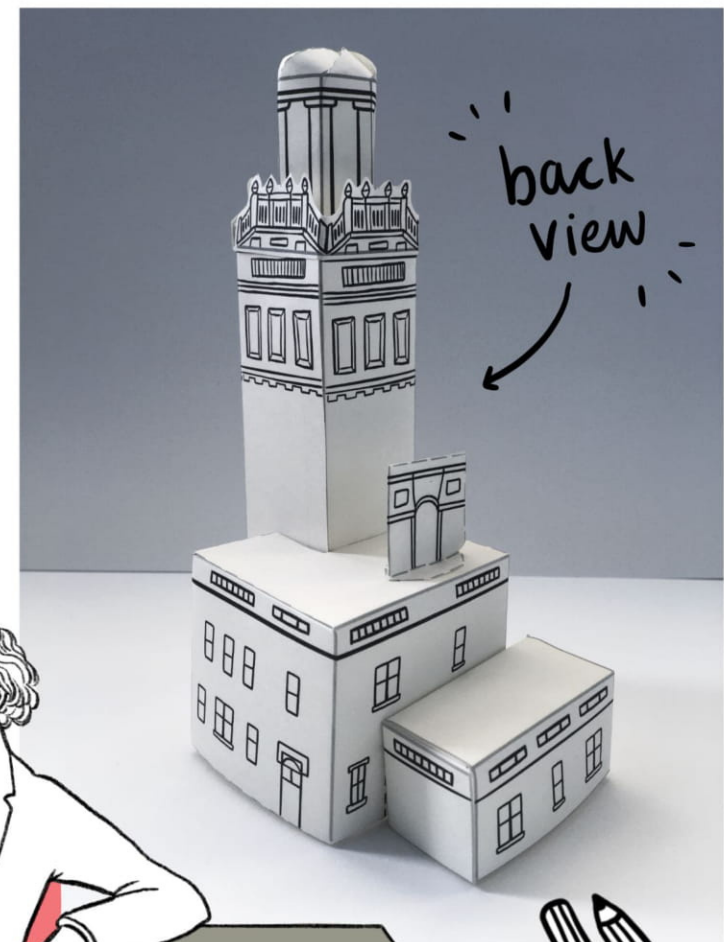
William loved to build towers and collect special objects. William didn't live here, his Tower was where he kept his treasures and enjoyed them. If you had your own tower, what would you put inside?

Did you Know?

Beckford's Tower was built for a man called William Beckford between 1826 and 1827 - (that's nearly 200 years ago!)

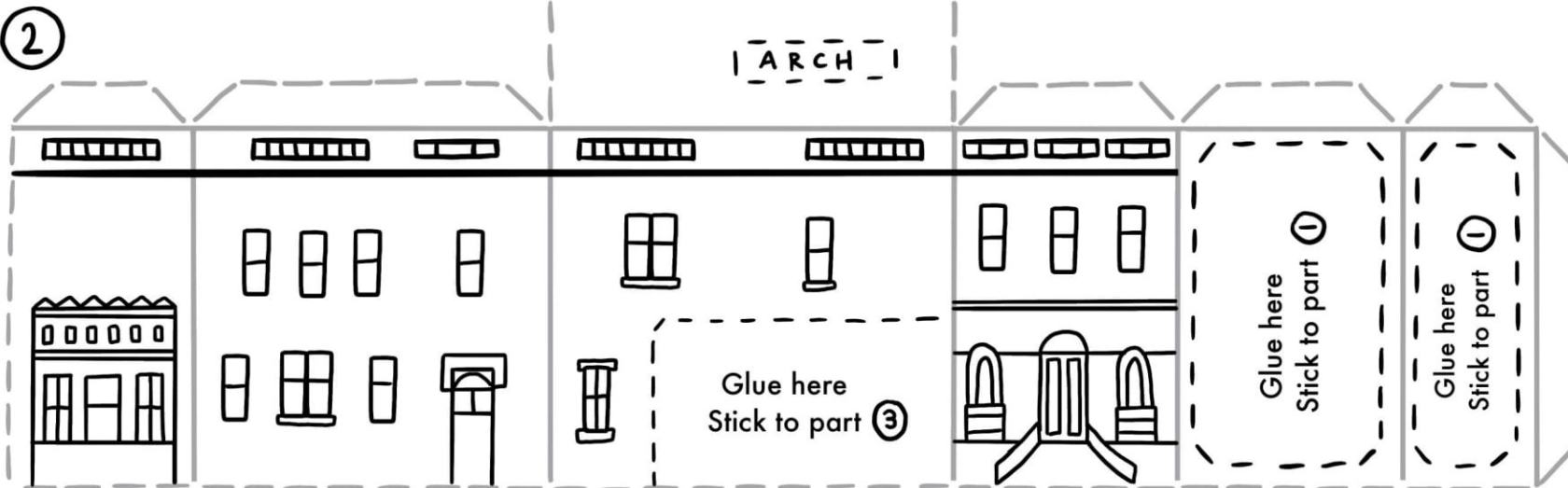
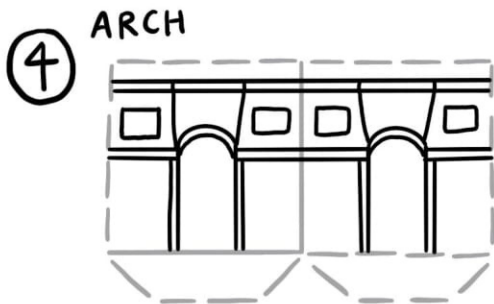
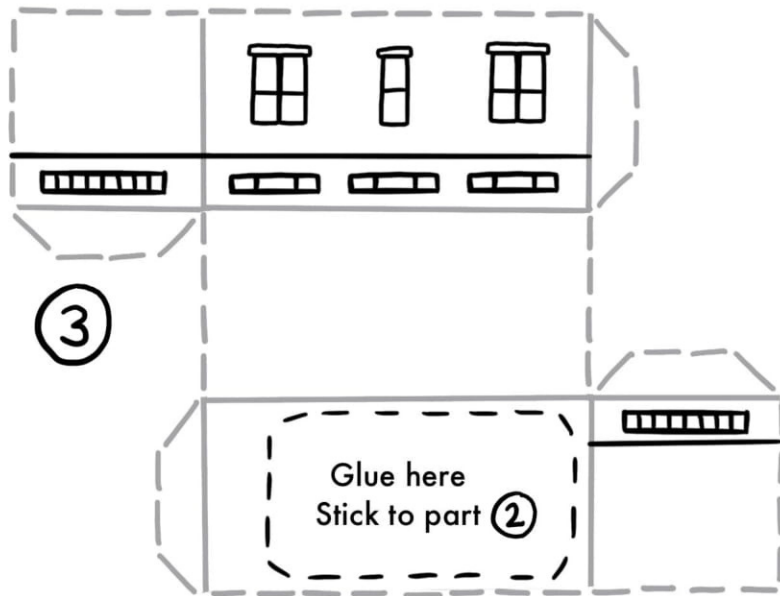
William's father owned huge sugar farms in Jamaica. He made enslaved people from Africa work very hard on his land, and he made a lot of money from their suffering.

When his father died, William inherited lots of money and became very rich.

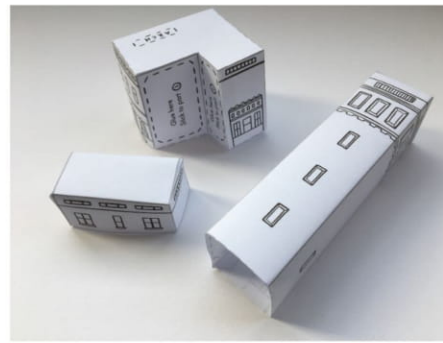


back
view





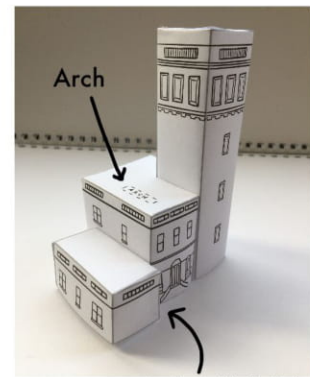
HOW TO MAKE



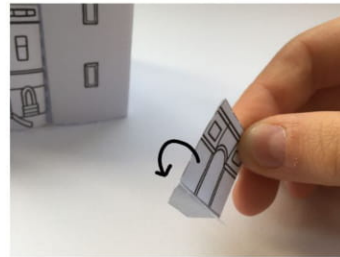
Make up parts 1, 2 and 3 so you have 3 different 3D shapes.



Glue all 3 sections together where the "Glue here" sections show.



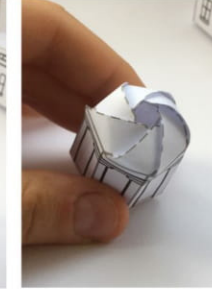
Part 3 should slightly overlap part 2



Fold part 4 and glue back to back, then fold tabs outwards and stick to top of part 2 where it says 'Arch'



For part 5, tuck the top flaps under each other to create the curved top.



Stick part 6 around the top of part 1, and stick part 5 to the top.



Key:

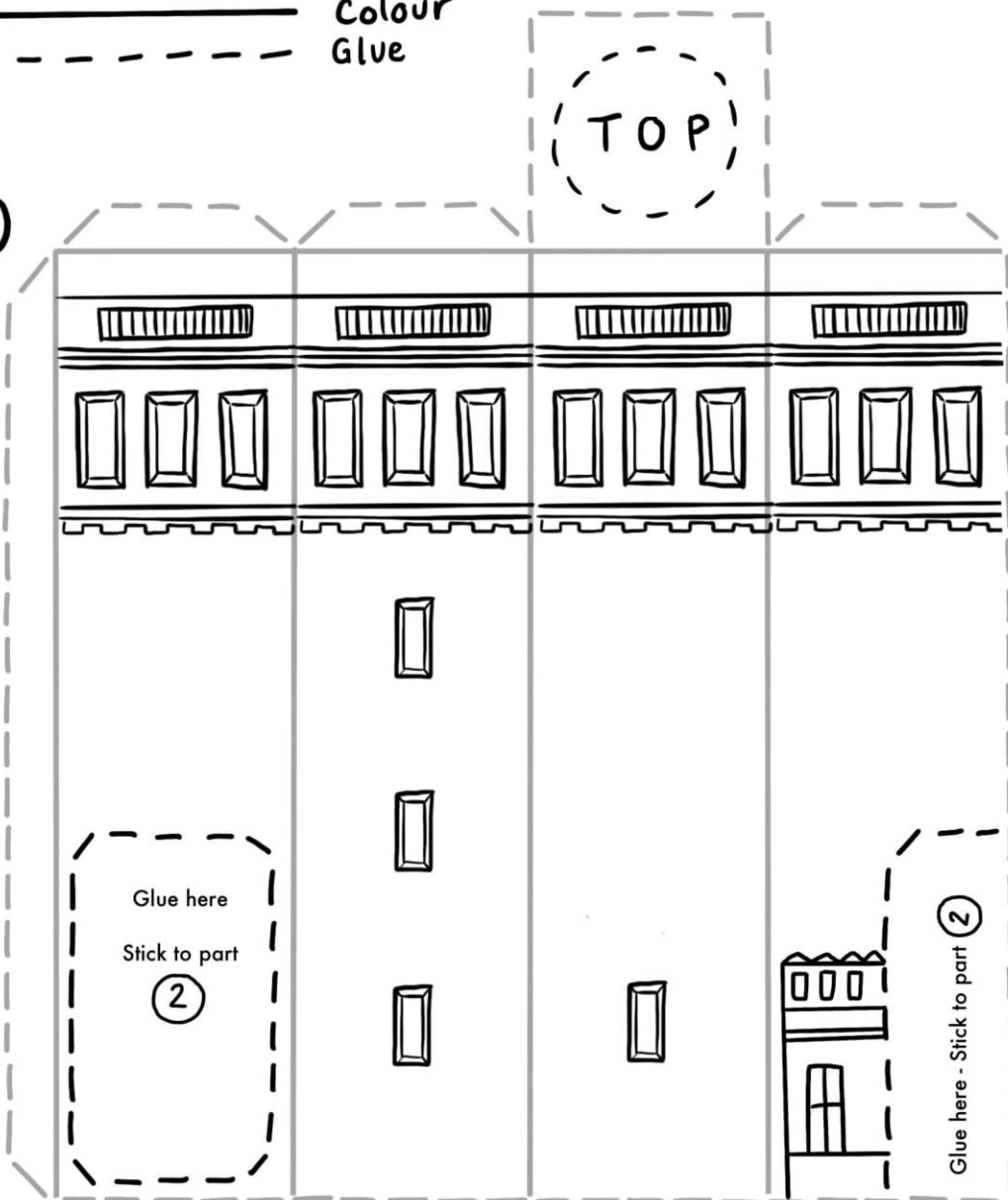
- - - - - Cut
 _____ Fold
 _____ Colour
 - - - - - Glue



Key:

----- Cut
===== Fold
===== Colour
----- Glue

①



⑥



⑤

